

# MONTHLY MEMBERSHIP PROGRESS REPORT

District 305 N2

Results as of: 3/31/2026

GMT:

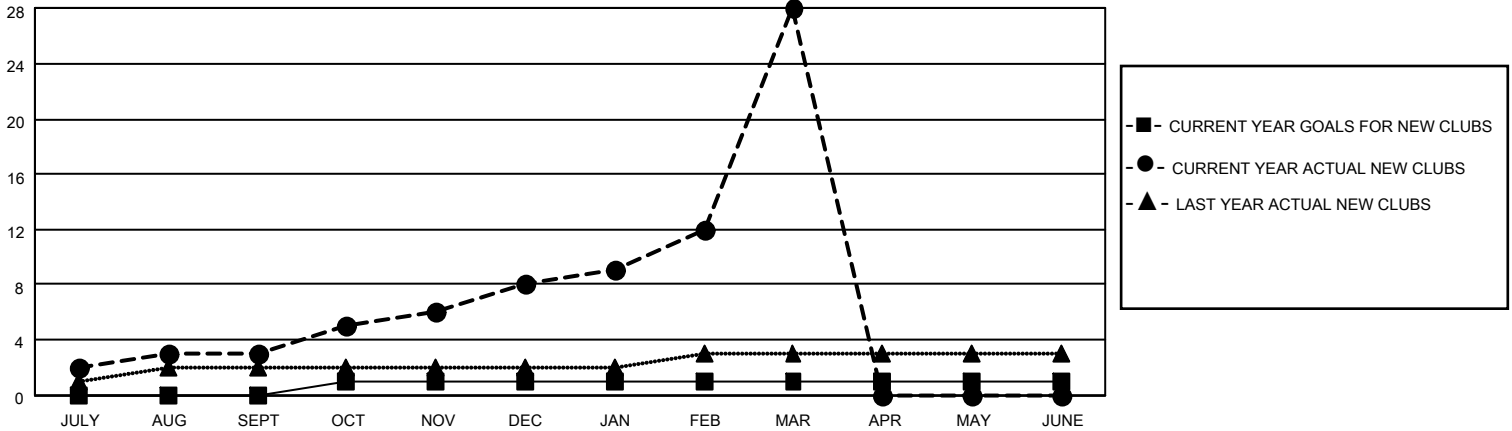
LOCATION PAKISTAN

GMT CA

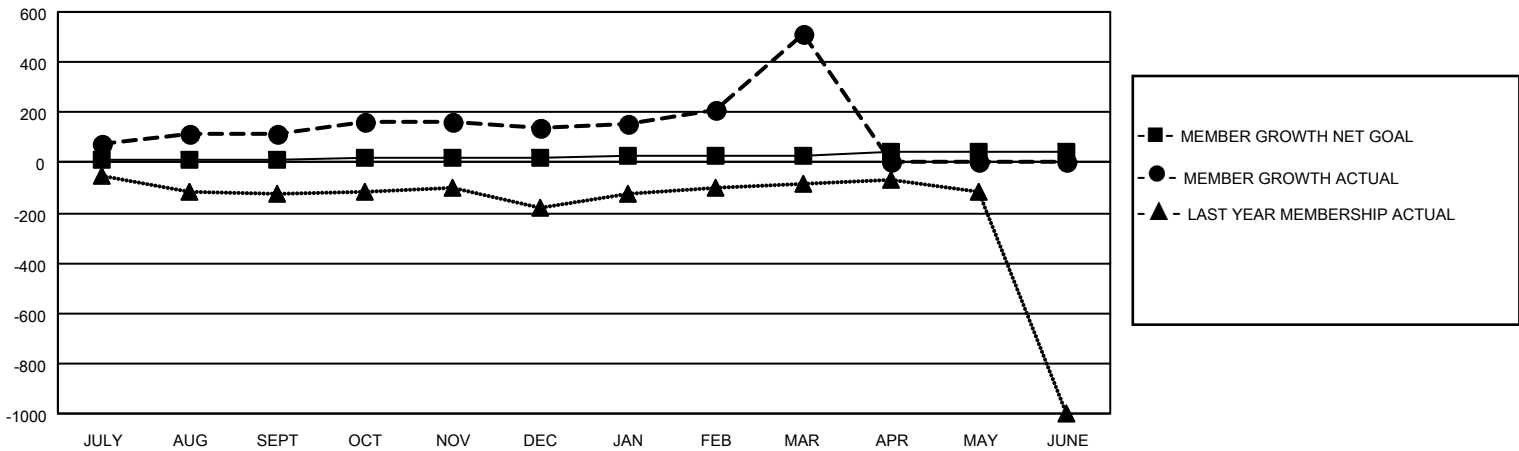
Clubs			
RESULTS FOR 2025-2026			
QUARTER	NEW CLUB GOAL	NEW CLUBS	DROPPED CLUBS
JULY/AUG/SEPT	0	3	0
OCT/NOV/DEC	1	5	1
JAN/FEB/MAR	0	20	1
APR/MAY/JUNE	0	0	0

Members			
RESULTS FOR 2025-2026			
QUARTER	MEMBER GROWTH NET GOAL	MEMBER GROWTH ACTUAL	DROPPED MEMBERS ACTUAL (including transfers)
JULY/AUG/SEPT	10	156	19
OCT/NOV/DEC	10	140	103
JAN/FEB/MAR	10	544	59
APR/MAY/JUNE	10	0	0

GOALS AND ACTUAL NEW CLUBS CUMULATIVE



GOALS AND ACTUAL MEMBERS CUMULATIVE



DROPPED CLUBS: 2

71 CLUBS OF 142 ADDED 1 OR MORE NEW MEMBERS

GENDER DISTRIBUTION

MALE 1,802 (79.84%)  
FEMALE 455 (20.16%)

DROPPED MEMBERS

[CLICK HERE FOR CUMULATIVE MEMBERSHIP DATA](#)

DECEASED	4
CLUB CANCELLED	26
OTHER	151
<b>TOTAL</b>	<b>181</b>

TOTAL FAMILY UNIT MEMBERS	1,720
FAMILY MEMBERS PAYING HALF DUES	1,299